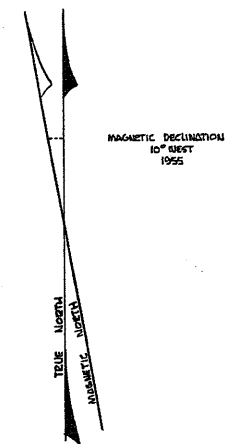


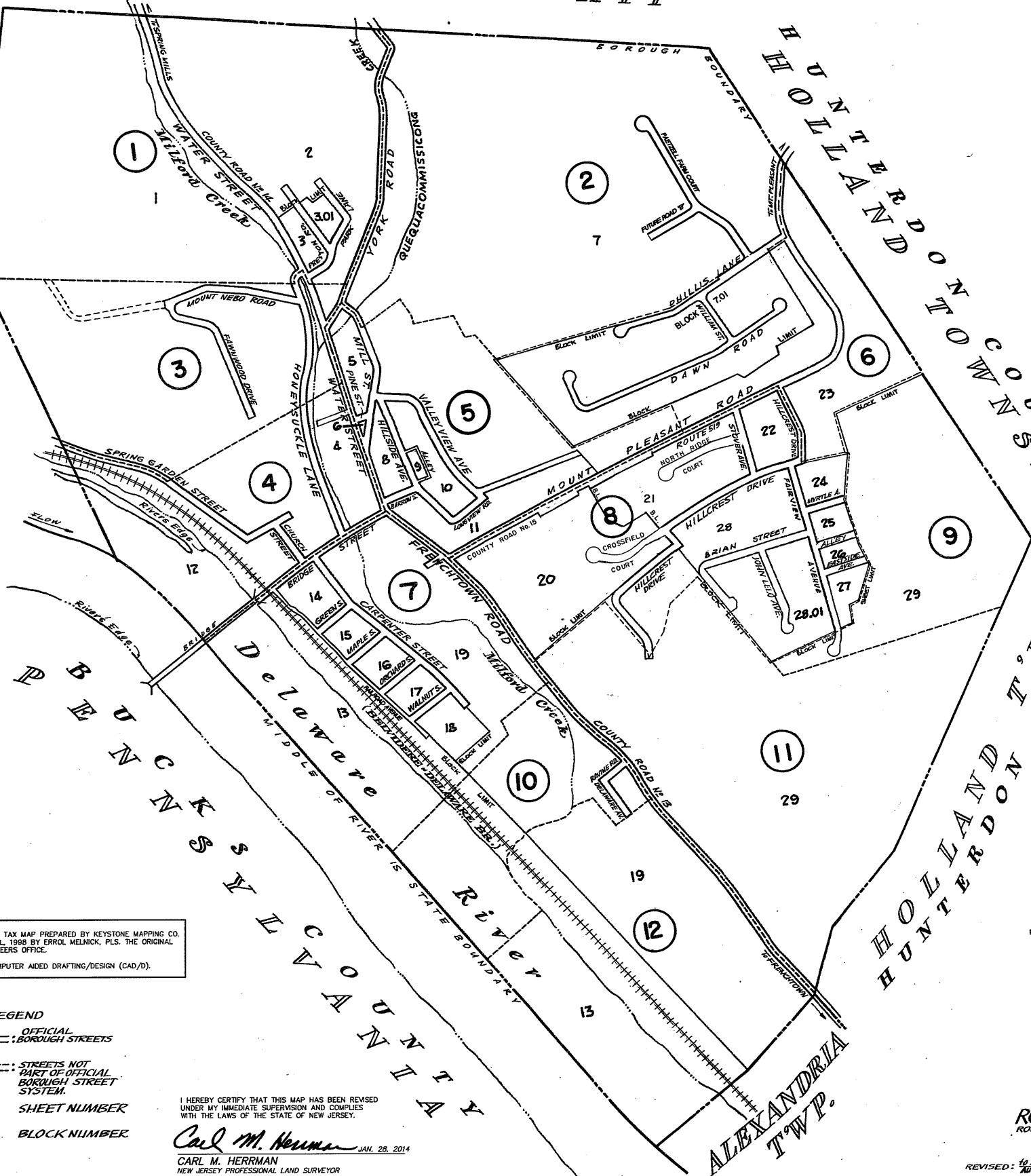
HUNTERDON COUNTY  
HOLLAND TOWNSHIP

REVISIONS		
DATE	L.S. NAME	LSNO.
3/5/87	ROBERT C. BOGART	15474
JAN. 1, 1988	ROBERT C. BOGART	15474
4/1/88	ROBERT C. BOGART	15474
4/1/89	ROBERT C. BOGART	15474
7/1/89	ROBERT C. BOGART	15474
10/1/89	ROBERT C. BOGART	15474
1/1/90	ROBERT C. BOGART	15474
FEB., 1997	ERROL MELNICK	34013
APRIL, 1998	ERROL MELNICK	34013
DEC. 2012	CARL M. HERRMAN, PLS	42271



HOLLAND TWP.  
HUNTERDON COUNTY

HUNTERDON COUNTY  
HOLLAND TWP.



THE AREAS, BOUNDARIES AND DIMENSIONS SHOWN ON THIS TAX MAP ARE DERIVED FROM GROUND SURVEYS, AERIAL SURVEYS, AND RECORDED PLANS, MAPS, DEEDS, WILLS, AND ARE TO BE USED FOR ASSESSMENT PURPOSES ONLY.

I HEREBY CERTIFY THAT THIS MAP AND ANY REQUIRED SURVEY HAS BEEN MADE UNDER MY IMMEDIATE SUPERVISION, AND COMPLIES WITH THE LAWS OF THE STATE OF NEW JERSEY.  
 3-20-87 *Robert C. Bogart* PLS  
 DATE, ROBERT C. BOGART P.E., L.S. #15474  
 ROBERT C. BOGART AND ASSOCIATES  
 ROUTE 31 & EMERY AVE.  
 FLEMINGTON, NEW JERSEY

VAN CLEEF ENGINEERING ASSOCIATES  
 1129, RT. 31, LEBANON, NEW JERSEY  
 REVISED: JAN. 20, 1982 / NOV. 25, 1996

HERITAGE CONSULTING ENGINEERS  
 153 BROAD ST., FLEMINGTON, NEW JERSEY  
 REVISED: DEC. 1, 1982, JAN. 1, 1984, JAN. 1, 1985, JAN. 1, 1986  
 DEC. 1, 1986

TAX MAP  
 BORO. OF MILFORD  
 HUNTERDON COUNTY, NEW JERSEY  
 SCALE 1"=400'  
 NOVEMBER 1968.  
 AS REVISED BY  
 BOHREN BOGART & VAN CLEEF  
 ENGINEERING ASSOCIATES, INC.  
 92 CHURCH ST. FLEMINGTON, N.J. DANIEL ROAD BELLE MEAD, N.J.

ROBERT C. BOGART & ASSOCIATES  
 ROUTE 31 & EMERY AVE., FLEMINGTON, NEW JERSEY

REVISED TO DEC. 12, 1969  
 REVISED TO 9/29/1972  
 REVISED TO JULY 1, 1973

REVISED: 10 JULY, 1973, AUG. 1, 1974, MAY 1, 1975, NOV. 1, 1975  
 AUG. 1, 1976, NOV. 1, 1978, JAN. 1, 1980

TO SHOW CONDITIONS OF DEC. 2012  
 TO SHOW CONDITIONS AS OF 4/1/87

THIS SHEET IS A SCANNED COPY OF THE TAX MAP PREPARED BY KEYSTONE MAPPING CO. INC. IN AUG. 1988 AND REVISED TO APRIL, 1998 BY ERROL MELNICK, PLS. THE ORIGINAL APPROVED MAP IS ON FILE IN THE ENGINEERS OFFICE.  
 REVISIONS HAVE BEEN DRAWN USING COMPUTER AIDED DRAFTING/DESIGN (CAD/D).

- LEGEND
- OFFICIAL BORO. STREETS
  - - - STREETS NOT PART OF OFFICIAL BORO. STREET SYSTEM.
  - ① SHEET NUMBER
  - 12 BLOCK NUMBER

I HEREBY CERTIFY THAT THIS MAP HAS BEEN REVISED UNDER MY IMMEDIATE SUPERVISION AND COMPLIES WITH THE LAWS OF THE STATE OF NEW JERSEY.  
*Carl M. Herrman* JAN. 28, 2014  
 CARL M. HERRMAN  
 NEW JERSEY PROFESSIONAL LAND SURVEYOR  
 NJ LICENSE No. GS42271

APRIL, 1998 ERROL MELNICK, P.L.S. N.J. #34013  
DEC. 2012 CARL M. HERRMAN, PLS N.J. #42271

VAN CLEEF ENGINEERING ASSOCIATES  
1128, RT. 31, LEBANON, NEW JERSEY

HERITAGE CONSULTING ENGINEERS  
153 BROAD ST., FLEMINGTON, NEW JERSEY

ROBERT C. BOGART & ASSOCIATES  
ROUTES 51 & EMERY AVE., FLEMINGTON, NEW JERSEY

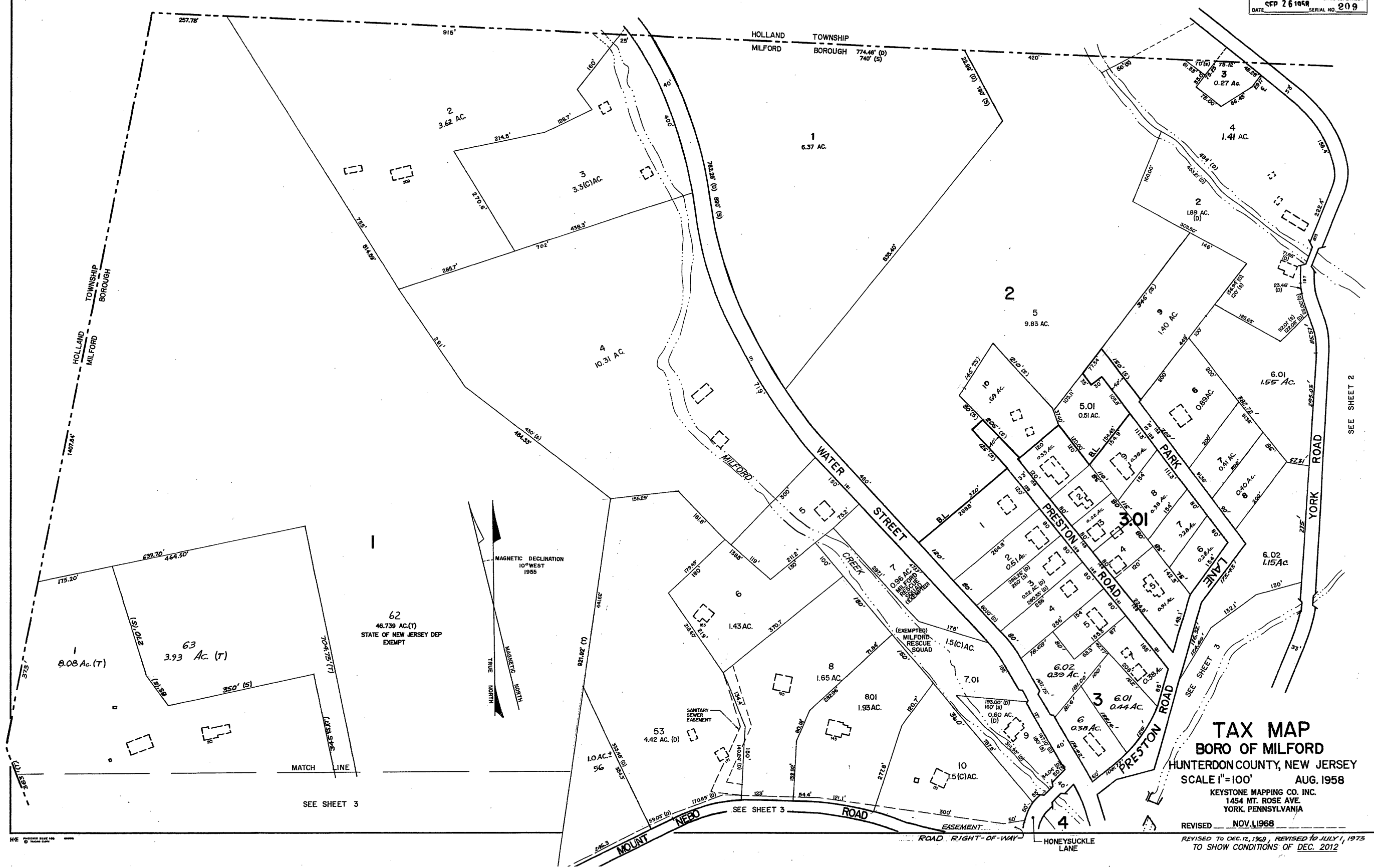
THIS SHEET IS A SCANNED COPY OF THE TAX MAP PREPARED BY KEYSTONE MAPPING CO. INC. IN AUG, 1988 AND REVISED TO APRIL, 1998 BY ERROL MELNICK, PLS. THE ORIGINAL APPROVED MAP IS ON FILE IN THE ENGINEERS OFFICE.  
REVISIONS HAVE BEEN DRAWN USING COMPUTER AIDED DRAFTING/DESIGN (CAD/D).

REVISED: JAN. 20, 1992

REVISED: DEC. 1, 1982, JAN. 1, 1984, JAN. 1, 1985, JAN. 1, 1986  
DEC. 1, 1988

REVISED: 10 JULY, 1973, AUG. 1, 1974, MAY 1, 1975, NOV. 1, 1975  
AUG. 1, 1976, NOV. 1, 1978, JAN. 1, 1980, JAN. 1, 1988

NEW JERSEY DEPARTMENT OF THE TREASURY  
APPROVED AS A TAX MAP PURSUANT TO THE PROVISIONS OF CHAPTER 175 LAWS OF 1913  
BY: *C. Bogart*  
STATE SUPERVISOR  
DATE: SEP 26 1988 SERIAL NO. 209



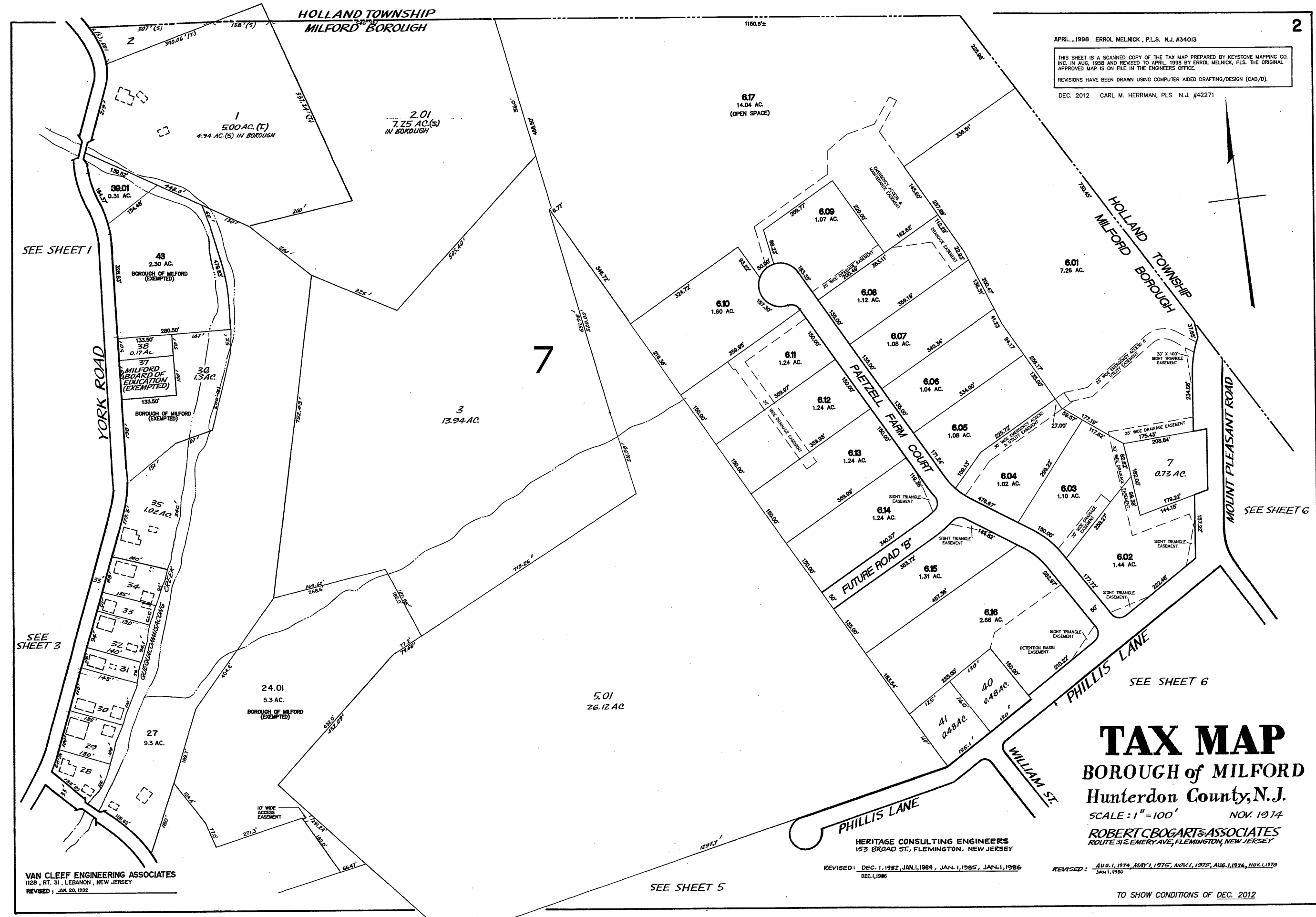
**TAX MAP**  
**BORO OF MILFORD**  
HUNTERDON COUNTY, NEW JERSEY  
SCALE 1"=100' AUG. 1958  
KEYSTONE MAPPING CO. INC.  
1454 MT. ROSE AVE.  
YORK, PENNSYLVANIA  
REVISED NOV. 1, 1968  
REVISED TO DEC. 1, 1988, REVISED TO JULY 1, 1975  
TO SHOW CONDITIONS OF DEC. 2012

APRIL, 1998 ERROL MELNICK, P.L.S. N.J. #34013

THIS SHEET IS A SCANNED COPY OF THE TAX MAP PREPARED BY KEYSTONE MAPPING CO. INC. IN AUG. 1998 AND REVISED TO APRIL, 1999 BY ERROL MELNICK, P.L.S. THE ORIGINAL APPROVED MAP IS ON FILE IN THE ENGINEERS OFFICE.

REVISIONS HAVE BEEN DRAWN USING COMPUTER AIDED DRAFTING/DESIGN (CAD/D).

DEC. 2012 CARL M. HERRMAN, PLS N.J. #42271



VAN CLEEF ENGINEERING ASSOCIATES  
1128 RT. 31, LEBANON, NEW JERSEY  
REVISED: JAN. 20, 1992

HERITAGE CONSULTING ENGINEERS  
153 BROAD ST., FLEMINGTON, NEW JERSEY  
REVISED: DEC. 1, 1982, JAN. 1, 1984, JAN. 1, 1985, JAN. 1, 1986  
DEC. 1, 1986

REVISED: AUG. 1, 1974, MAY 1, 1975, NOV. 1, 1975, AUG. 1, 1976, NOV. 1, 1979  
JAN. 1, 1980

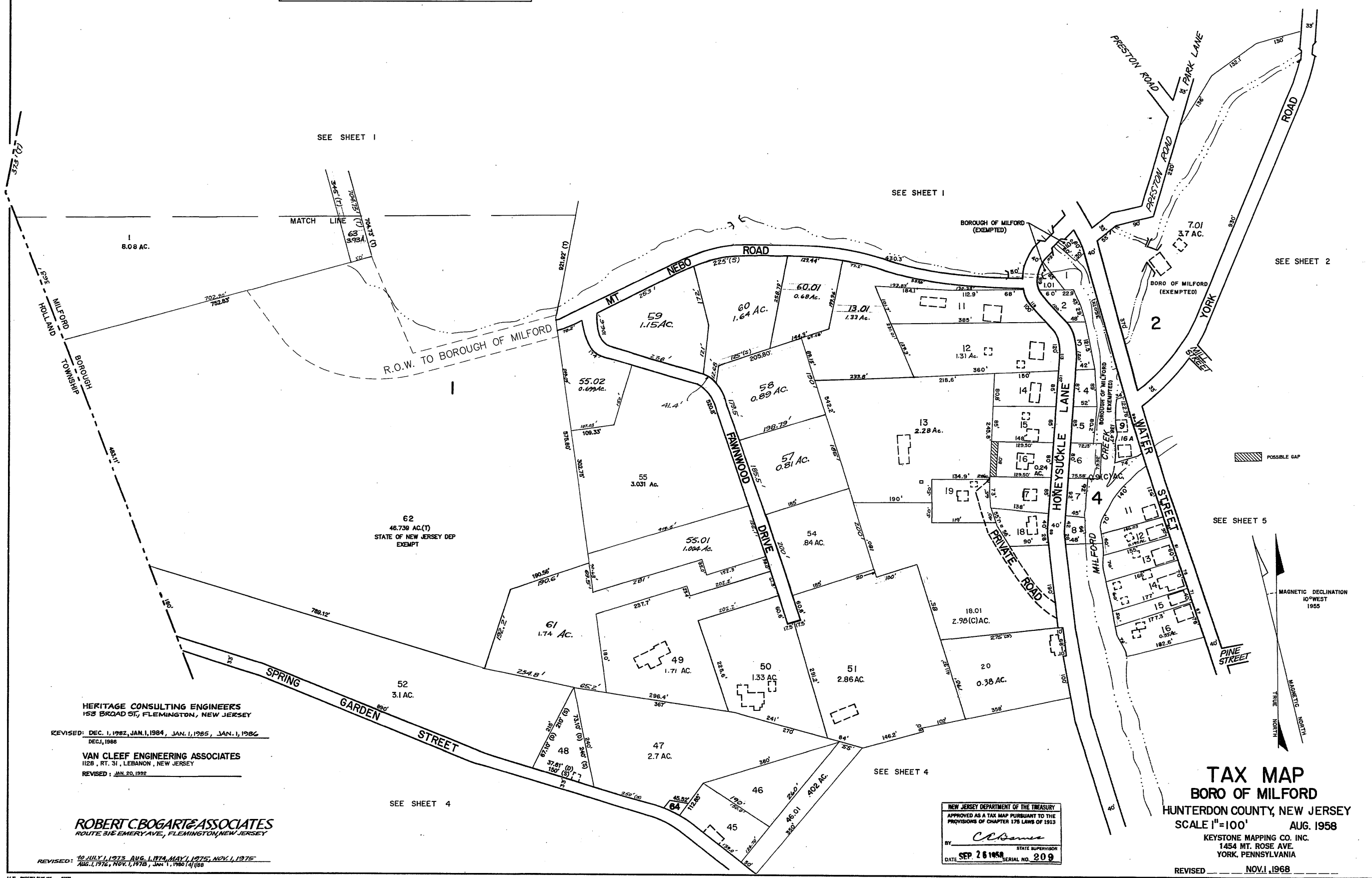
**TAX MAP**  
BOROUGH of MILFORD  
Hunterdon County, N.J.  
SCALE: 1" = 100' NOV. 1974  
ROBERT BOGART & ASSOCIATES  
ROUTE 31 & EMERY AVE, FLEMINGTON, NEW JERSEY

TO SHOW CONDITIONS OF DEC. 2012

APRIL, 1998 ERROL MELNICK, P.L.S. N.J. #34013  
DEC. 2012 CARL M. HERRMAN, PLS. N.J. #42271

THIS SHEET IS A SCANNED COPY OF THE TAX MAP PREPARED BY KEYSTONE MAPPING CO. INC. IN AUG. 1958 AND REVISED TO APRIL, 1998 BY ERROL MELNICK, P.L.S. THE ORIGINAL APPROVED MAP IS ON FILE IN THE ENGINEERS OFFICE.

REVISIONS HAVE BEEN DRAWN USING COMPUTER AIDED DRAFTING/DESIGN (CAD/D).



HERITAGE CONSULTING ENGINEERS  
153 BROAD ST, FLEMINGTON, NEW JERSEY  
REVISED: DEC. 1, 1982, JAN. 1, 1984, JAN. 1, 1985, JAN. 1, 1986  
DEC. 1, 1988

VAN CLEEF ENGINEERING ASSOCIATES  
1128 RT. 31, LEBANON, NEW JERSEY  
REVISED: JAN. 20, 1992

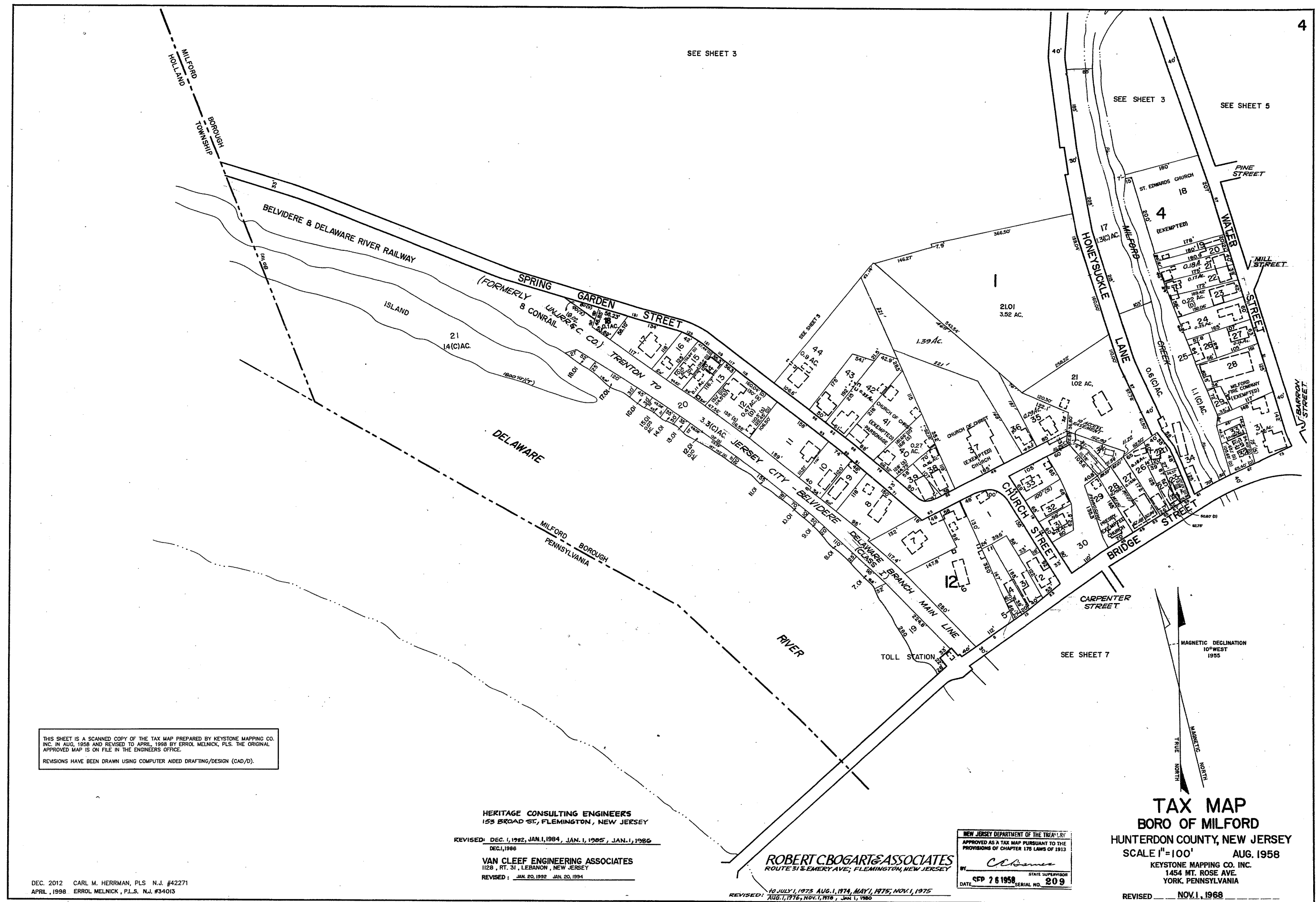
ROBERT C. BOGART & ASSOCIATES  
ROUTE 316 EMERY AVE., FLEMINGTON, NEW JERSEY

REVISED: 10 JULY 1, 1973, AUG. 1, 1974, MAY 1, 1975, NOV. 1, 1975  
AUG. 1, 1976, NOV. 1, 1978, JAN. 1, 1980, 1981

NEW JERSEY DEPARTMENT OF THE TREASURY  
APPROVED AS A TAX MAP PURSUANT TO THE  
PROVISIONS OF CHAPTER 175 LAWS OF 1913  
BY *C. J. Barnes* STATE SUPERVISOR  
DATE SEP. 26 1958 SERIAL NO. 209

TAX MAP  
BORO OF MILFORD  
HUNTERDON COUNTY, NEW JERSEY  
SCALE 1"=100' AUG. 1958  
KEYSTONE MAPPING CO. INC.  
1454 MT. ROSE AVE.  
YORK, PENNSYLVANIA  
REVISED NOV. 1, 1968

REVISED TO DEC. 12, 1969 REVISED TO JULY 1, 1975  
TO SHOW CONDITIONS OF DEC. 2012



THIS SHEET IS A SCANNED COPY OF THE TAX MAP PREPARED BY KEYSTONE MAPPING CO. INC. IN AUG. 1958 AND REVISED TO APRIL, 1998 BY ERROL MELNICK, PLS. THE ORIGINAL APPROVED MAP IS ON FILE IN THE ENGINEERS OFFICE.  
 REVISIONS HAVE BEEN DRAWN USING COMPUTER AIDED DRAFTING/DESIGN (CAD/D).

HERITAGE CONSULTING ENGINEERS  
 153 BROAD ST., FLEMINGTON, NEW JERSEY  
 REVISED: DEC. 1, 1982, JAN. 1, 1984, JAN. 1, 1985, JAN. 1, 1986  
 DEC. 1, 1986  
 VAN CLEEF ENGINEERING ASSOCIATES  
 1128, RT. 31, LEBANON, NEW JERSEY  
 REVISED: JAN. 20, 1992, JAN. 20, 1994

ROBERT C. BOGART & ASSOCIATES  
 ROUTE 31 & EMERY AVE., FLEMINGTON, NEW JERSEY

NEW JERSEY DEPARTMENT OF THE TREASURY  
 APPROVED AS A TAX MAP PURSUANT TO THE PROVISIONS OF CHAPTER 175 LAWS OF 1913  
 BY: *C. Bogart*  
 DATE: SEP 26 1958 STATE SUPERVISOR SERIAL NO. 209

**TAX MAP**  
**BORO OF MILFORD**  
 HUNTERDON COUNTY, NEW JERSEY  
 SCALE 1"=100' AUG. 1958  
 KEYSTONE MAPPING CO. INC.  
 1454 MT. ROSE AVE.  
 YORK, PENNSYLVANIA  
 REVISED NOV. 1, 1968

DEC. 2012 CARL M. HERRMAN, PLS. N.J. #42271  
 APRIL, 1998 ERROL MELNICK, P.L.S. N.J. #34013

REVISED: 10 JULY, 1975, AUG. 1, 1974, MAY 1, 1975, NOV. 1, 1975  
 AUG. 1, 1976, NOV. 1, 1978, JAN. 1, 1980

REVISED TO DEC. 12, 1969, REVISED TO JULY 1, 1973  
 TO SHOW CONDITIONS OF DEC. 2012

SEE SHEET 3

SEE SHEET 2

SEE SHEET 2

SEE SHEET 6

SEE SHEET 4

SEE SHEET 8

SEE SHEET 7

DEC. 2012 CARL M. HERRMAN, PLS. N.J. #42271  
 APRIL, 1998 ERROL MELNICK, P.L.S. N.J. #34013  
**VAN CLEEF ENGINEERING ASSOCIATES**  
 1128, RT. 31, LEBANON, NEW JERSEY  
 REVISED: JAN. 20, 1992

**HERITAGE CONSULTING ENGINEERS**  
 153 BROAD ST., FLEMINGTON, NEW JERSEY  
 REVISED: DEC. 1, 1982, JAN. 1, 1984, JAN. 1, 1985, JAN. 1, 1986  
 DEC. 1, 1988

**ROBERT C. BOGART & ASSOCIATES**  
 ROUTE 51 & EMERY AVE., FLEMINGTON, NEW JERSEY

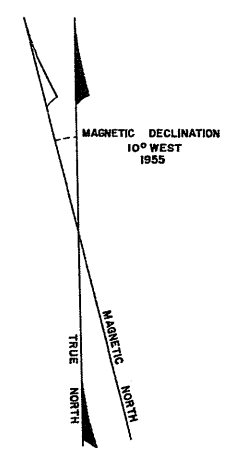
REVISED: 10 JULY, 1973, AUG. 1, 1974, MAY 1, 1975, NOV. 1, 1975  
 AUG. 1, 1976, NOV. 1, 1978, JAN. 1, 1980, APRIL 1, 1988

THIS SHEET IS A SCANNED COPY OF THE TAX MAP PREPARED BY KEYSTONE MAPPING CO. INC. IN AUG. 1958 AND REVISED TO APRIL, 1998 BY ERROL MELNICK, PLS. THE ORIGINAL APPROVED MAP IS ON FILE IN THE ENGINEERS' OFFICE.  
 REVISIONS HAVE BEEN DRAWN USING COMPUTER AIDED DRAFTING/DESIGN (CAD/D).

NEW JERSEY DEPARTMENT OF THE TREASURY  
 APPROVED AS A TAX MAP PURSUANT TO THE PROVISIONS OF CHAPTER 175 LAWS OF 1913  
 BY *C. B. ...* STATE SUPERVISOR  
 DATE SEP 7 8 1968 SERIAL NO. 209

**TAX MAP**  
**BORO OF MILFORD**  
 HUNTERDON COUNTY, NEW JERSEY  
 SCALE 1"=100' AUG. 1958  
 KEYSTONE MAPPING CO. INC.  
 1454 MT. ROSE AVE.  
 YORK, PENNSYLVANIA

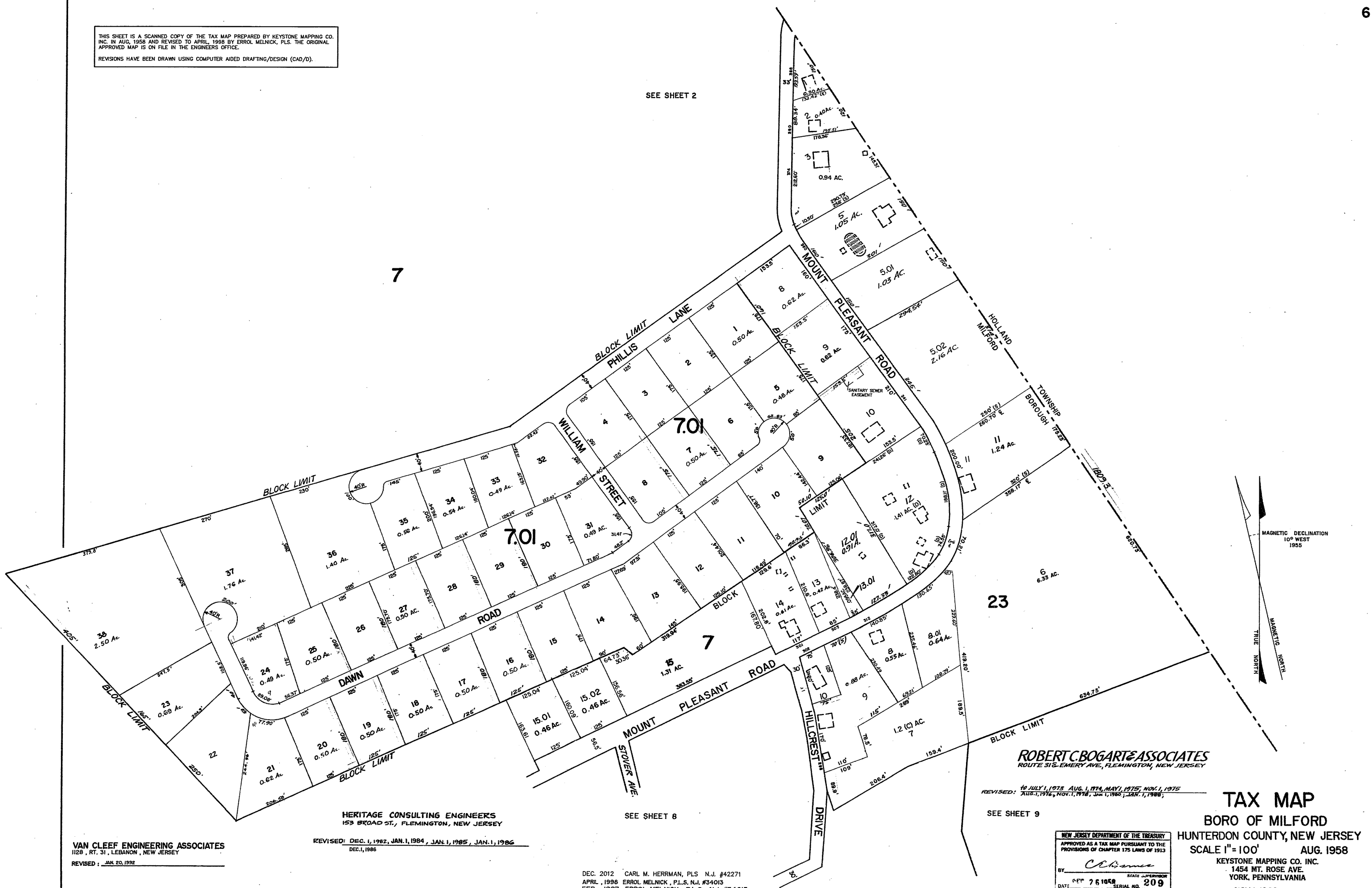
REVISED NOV. 1, 1968  
 REVISED DEC. 12, 1969, REVISED TO JULY 1, 1973  
 TO SHOW CONDITIONS OF DEC. 2012



THIS SHEET IS A SCANNED COPY OF THE TAX MAP PREPARED BY KEYSTONE MAPPING CO. INC. IN AUG. 1958 AND REVISED TO APRIL, 1998 BY ERROL MELNICK, P.L.S. THE ORIGINAL APPROVED MAP IS ON FILE IN THE ENGINEERS OFFICE.  
REVISIONS HAVE BEEN DRAWN USING COMPUTER AIDED DRAFTING/DESIGN (CAD/D).

SEE SHEET 2

7



SEE SHEET 8

**ROBERT C. BOGART & ASSOCIATES**  
ROUTE 318-EMERY AVE., FLEMINGTON, NEW JERSEY

REVISED: 10 JULY, 1973; AUG. 1, 1974; MAY, 1975; NOV. 1, 1975;  
AUG. 1, 1976; NOV. 1, 1978; JAN. 1, 1980; JAN. 1, 1988;

SEE SHEET 9

**VAN CLEEF ENGINEERING ASSOCIATES**  
1128 , RT. 31 , LEBANON , NEW JERSEY  
REVISED : JAN. 20, 1992

**HERITAGE CONSULTING ENGINEERS**  
153 BROAD ST., FLEMINGTON, NEW JERSEY  
REVISED: DEC. 1, 1982, JAN. 1, 1984, JAN. 1, 1985, JAN. 1, 1986  
DEC. 1, 1988

DEC. 2012 CARL M. HERRMAN, P.L.S. N.J. #42271  
APRIL, 1998 ERROL MELNICK, P.L.S. N.J. #34013  
FEB., 1997 ERROL MELNICK, P.L.S. N.J. #34013

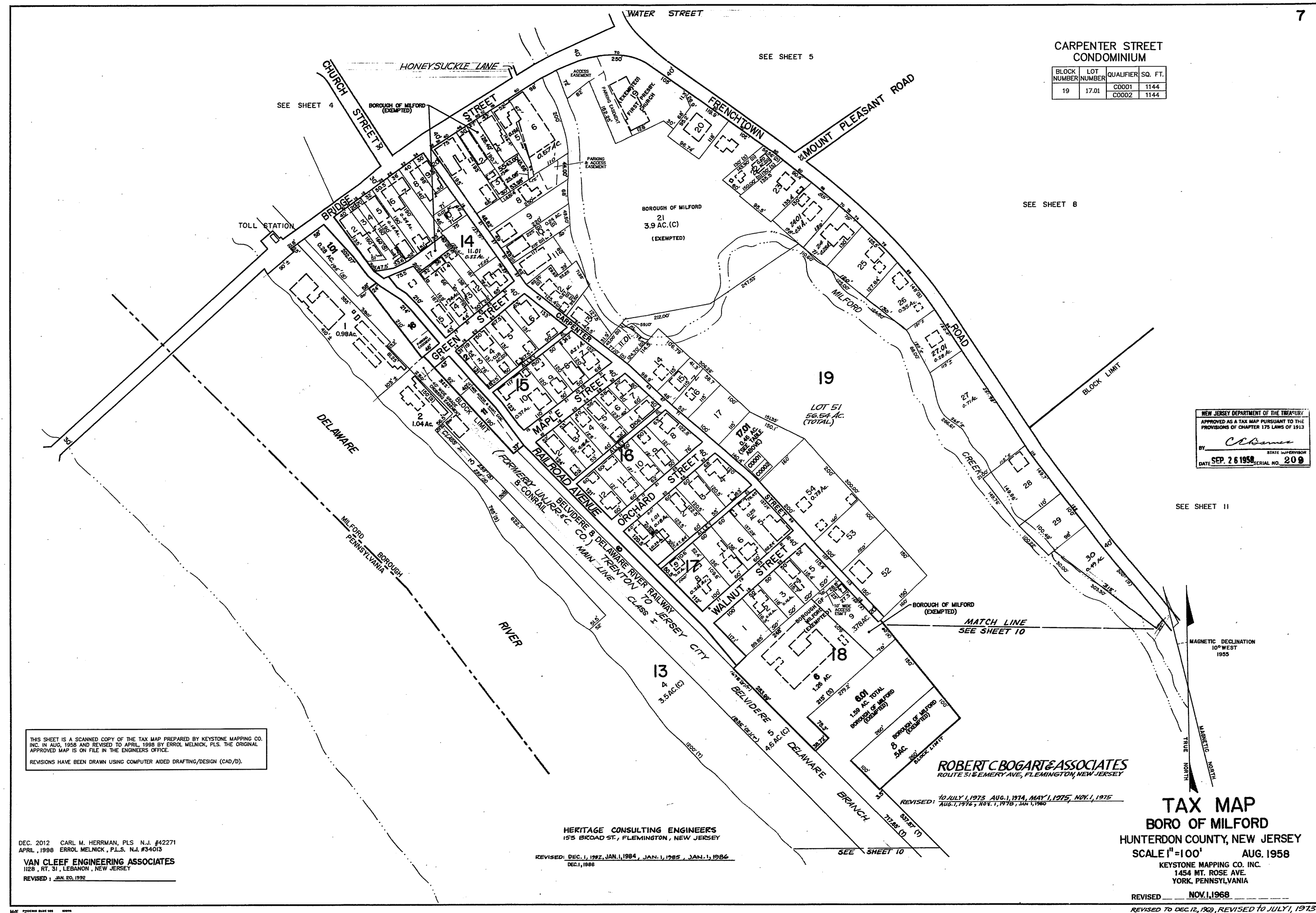
NEW JERSEY DEPARTMENT OF THE TREASURY  
APPROVED AS A TAX MAP PURSUANT TO THE  
PROVISIONS OF CHAPTER 175 LAWS OF 1913  
BY: *[Signature]*  
DATE: SEP 7 6 1958 STATE SUPERVISOR SERIAL NO. 209

**TAX MAP**  
BORO OF MILFORD  
HUNTERDON COUNTY, NEW JERSEY  
SCALE 1"=100' AUG. 1958  
KEYSTONE MAPPING CO. INC.  
1454 MT. ROSE AVE.  
YORK, PENNSYLVANIA  
REVISED NOV. 1, 1968

REVISED TO DEC. 12, 1969, REVISED TO JULY 1, 1973  
TO SHOW CONDITIONS OF DEC. 2012

CARPENTER STREET CONDOMINIUM

BLOCK NUMBER	LOT NUMBER	QUALIFIER	SQ. FT.
19	17.01	C0001	1144
		C0002	1144



NEW JERSEY DEPARTMENT OF THE TREASURY  
 APPROVED AS A TAX MAP PURSUANT TO THE PROVISIONS OF CHAPTER 175 LAWS OF 1913  
 BY: *C. C. Berman* STATE SUPERVISOR  
 DATE: SEP. 26 1958 SERIAL NO. 209

THIS SHEET IS A SCANNED COPY OF THE TAX MAP PREPARED BY KEYSTONE MAPPING CO. INC. IN AUG. 1958 AND REVISED TO APRIL 1988 BY ERROL MELNICK, P.L.S. THE ORIGINAL APPROVED MAP IS ON FILE IN THE ENGINEERS OFFICE.  
 REVISIONS HAVE BEEN DRAWN USING COMPUTER AIDED DRAFTING/DESIGN (CAD/D).

DEC. 2012 CARL M. HERRMAN, P.L.S. N.J. #42271  
 APRIL, 1998 ERROL MELNICK, P.L.S. N.J. #34013  
**VAN CLEEF ENGINEERING ASSOCIATES**  
 1128, RT. 31, LEBANON, NEW JERSEY  
 REVISED: JAN. 20, 1992

**HERITAGE CONSULTING ENGINEERS**  
 153 BROAD ST., FLEMINGTON, NEW JERSEY  
 REVISED: DEC. 1, 1982, JAN. 1, 1984, JAN. 1, 1985, JAN. 1, 1986  
 DEC. 1, 1988

**ROBERT C. BOGART & ASSOCIATES**  
 ROUTE 51 & EMERY AVE., FLEMINGTON, NEW JERSEY  
 REVISED: 10 JULY 1, 1973, AUG. 1, 1974, MAY 1, 1975, NOV. 1, 1975  
 AUG. 1, 1976, NOV. 1, 1978, JAN. 1, 1980

**TAX MAP**  
**BORO OF MILFORD**  
 HUNTERDON COUNTY, NEW JERSEY  
 SCALE 1"=100' AUG. 1958  
 KEYSTONE MAPPING CO. INC.  
 1454 MT. ROSE AVE.  
 YORK, PENNSYLVANIA  
 REVISED: NOV. 1, 1968  
 REVISED TO DEC. 12, 1969, REVISED TO JULY 1, 1973  
 TO SHOW CONDITIONS OF DEC. 2012



THIS SHEET IS A SCANNED COPY OF THE TAX MAP PREPARED BY KEYSTONE MAPPING CO. INC. IN AUG. 1958 AND REVISED TO APRIL, 1998 BY ERROL MELNICK, P.L.S. THE ORIGINAL APPROVED MAP IS ON FILE IN THE ENGINEERS OFFICE.  
REVISIONS HAVE BEEN DRAWN USING COMPUTER AIDED DRAFTING/DESIGN (CAD/D).

SEE SHEET 6

SEE SHEET 6

SEE SHEET 5

DEC. 2012 CARL M. HERRMAN, P.L.S. N.J. #42271  
APRIL, 1998 ERROL MELNICK, P.L.S. N.J. #34013  
FEB., 1997 ERROL MELNICK, P.L.S. N.J. #34013



MAGNETIC DECLINATION  
10° WEST  
1955

SEE SHEET 7

HERITAGE CONSULTING ENGINEERS  
153 BROAD ST., FLEMINGTON, NEW JERSEY

REVISED: DEC. 1, 1982, JAN. 1, 1984, JAN. 1, 1985, JAN. 1, 1986  
DEC. 1, 1988

SEE SHEET 11

VAN CLEEF ENGINEERING ASSOCIATES  
1128 RT. 31, LEBANON, NEW JERSEY  
REVISED: JAN. 20, 1992 / NOV. 25, 1996

ROBERT C. BOGART & ASSOCIATES  
ROUTE 31 & EMERY AVE., FLEMINGTON, NEW JERSEY

REVISED: 10 JULY, 1972, AUG. 1, 1974, MAY 1, 1975, NOV. 1, 1975  
AUG. 1, 1976, NOV. 1, 1978, JAN. 1, 1980, JAN. 1, 1985, 12/5/1990

NEW JERSEY DEPARTMENT OF THE TREASURY  
APPROVED AS A TAX MAP PURSUANT TO THE  
PROVISIONS OF CHAPTER 175 LAWS OF 1913  
*C. Bohannon*  
BY STATE SUPERVISOR  
DATE SEP. 26 1998 SERIAL NO. 209

SEE SHEET 11  
**TAX MAP**  
BORO OF MILFORD  
HUNTERDON COUNTY, NEW JERSEY  
SCALE 1"=100' AUG. 1958  
KEYSTONE MAPPING CO. INC.  
1454 MT. ROSE AVE.  
YORK, PENNSYLVANIA

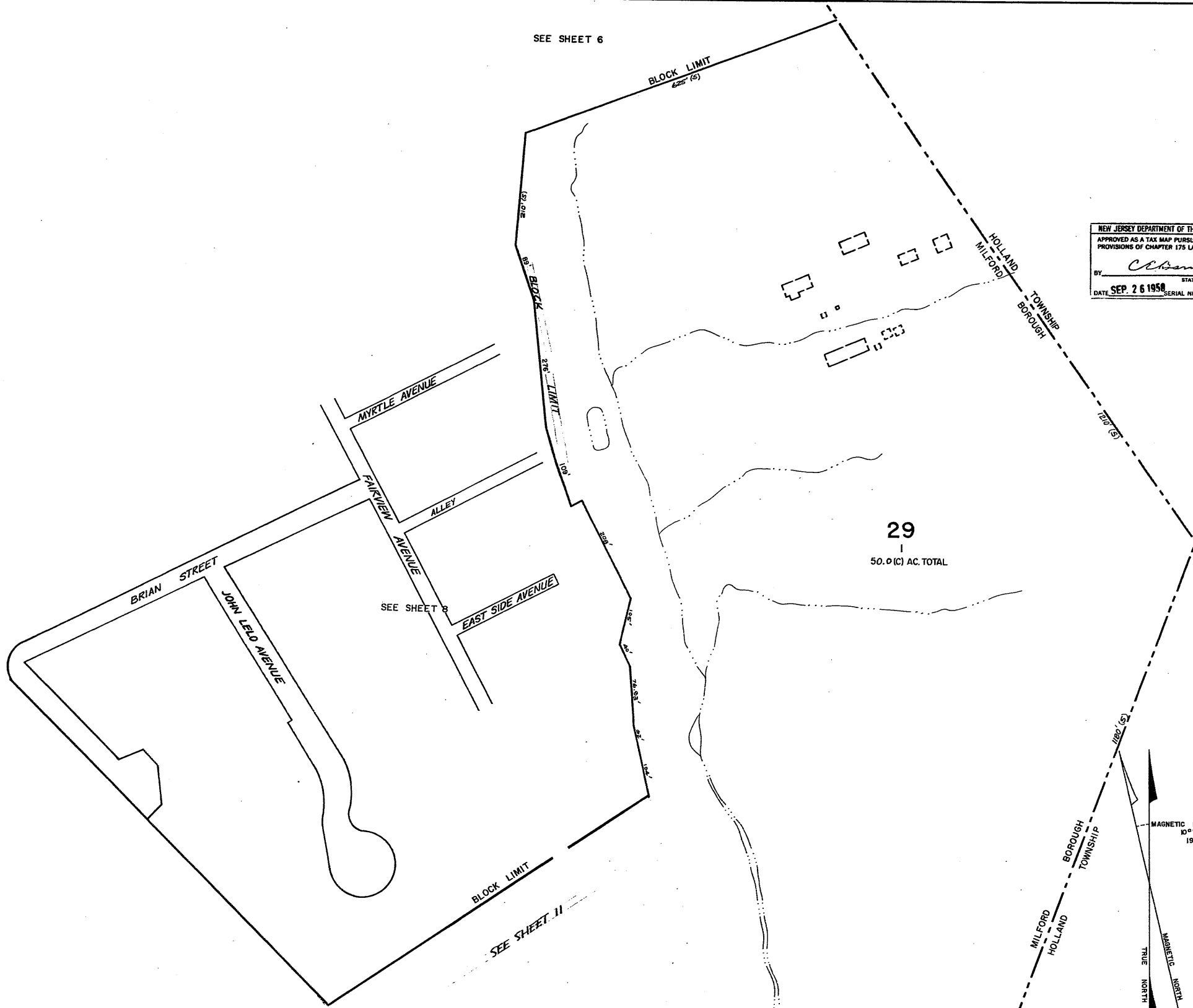
REVISED NOV. 1, 1968  
REVISED TO DEC. 12, 1968, REVISED TO JULY 1, 1973  
TO SHOW CONDITIONS OF DEC. 2012

SEE SHEET 9

THIS SHEET IS A SCANNED COPY OF THE TAX MAP PREPARED BY KEYSTONE MAPPING CO. INC. IN AUG. 1958 AND REVISED TO APRIL, 1998 BY ERROL MELNICK, PLS. THE ORIGINAL APPROVED MAP IS ON FILE IN THE ENGINEERS OFFICE.  
REVISIONS HAVE BEEN DRAWN USING COMPUTER AIDED DRAFTING/DESIGN (CAD/D).

SEE SHEET 6

NEW JERSEY DEPARTMENT OF THE TREASURY  
APPROVED AS A TAX MAP PURSUANT TO THE PROVISIONS OF CHAPTER 175 LAWS OF 1913  
BY: *C. Berman*  
STATE SUPERVISOR  
DATE: SEP. 26 1958 SERIAL NO. 209



HERITAGE CONSULTING ENGINEERS  
153 BROAD ST., FLEMINGTON, NEW JERSEY

REVISED: DEC. 1, 1982, JAN. 1, 1984, JAN. 1, 1985, JAN. 1, 1986  
DEC. 1, 1998

VAN CLEEF ENGINEERING ASSOCIATES  
1128 RT. 31, LEBANON, NEW JERSEY

REVISED: JAN. 20, 1992  
DEC. 2012 CARL M. HERRMAN, PLS. N.J. #42271

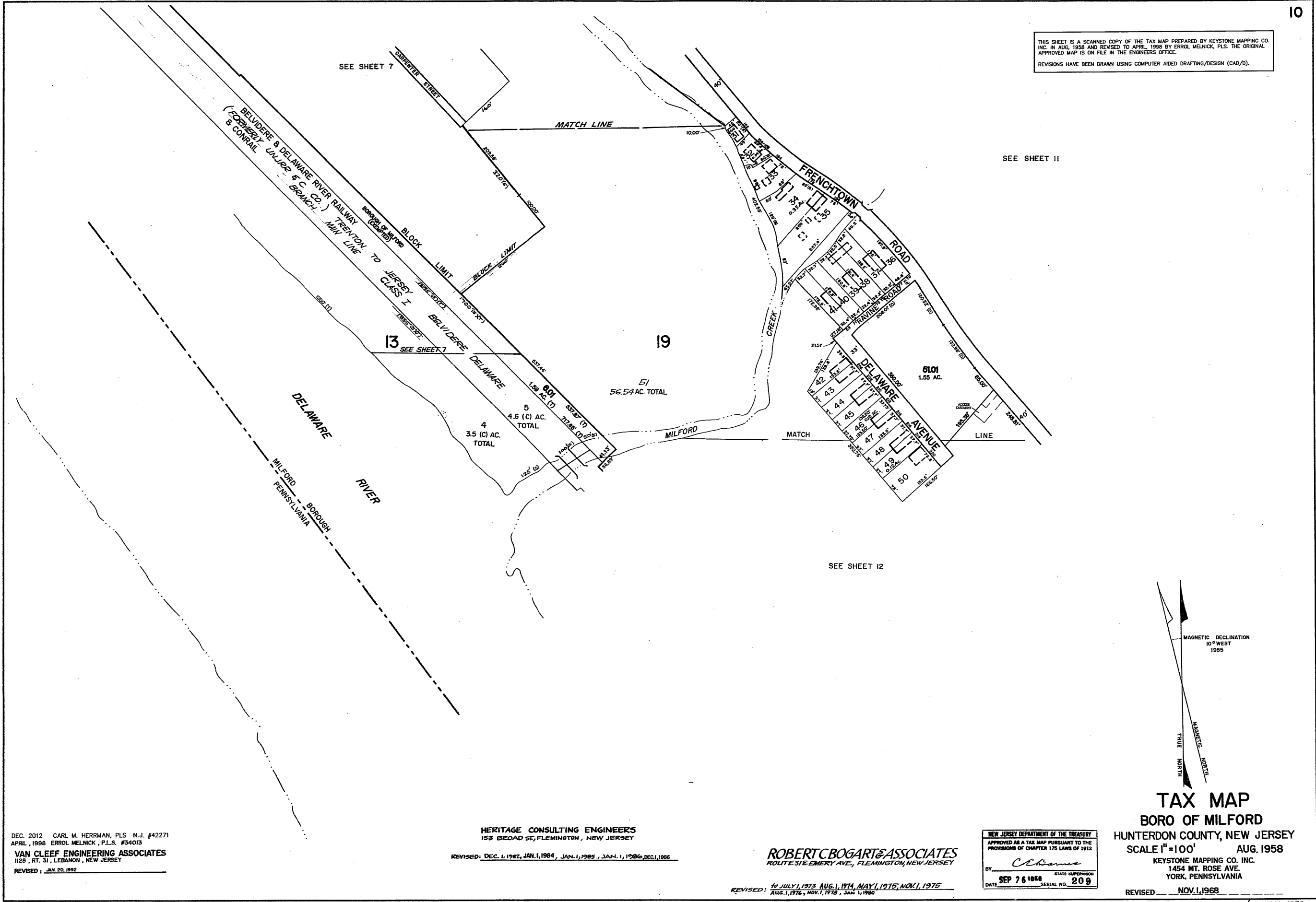
ROBERT C. BOGART & ASSOCIATES  
ROUTE 31 & EMERY AVE., FLEMINGTON, NEW JERSEY

REVISED: TO JULY 1, 1973, AUG. 1, 1974, MAY 1, 1975, NOV. 1, 1975  
AUG. 1, 1976, NOV. 1, 1978, JAN. 1, 1980, 12/5/1992

TAX MAP  
BORO OF MILFORD  
HUNTERDON COUNTY, NEW JERSEY  
SCALE 1"=100' AUG. 1958  
KEYSTONE MAPPING CO. INC.  
1454 MT. ROSE AVE.  
YORK, PENNSYLVANIA

REVISED NOV. 1, 1968  
REVISED TO DEC. 12, 1969, REVISED TO JULY, 1973  
TO SHOW CONDITIONS OF DEC. 2012

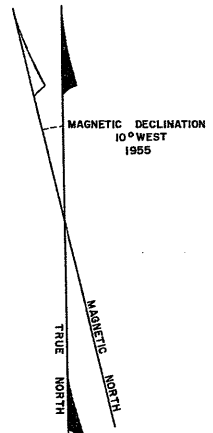
THIS SHEET IS A SCANNED COPY OF THE TAX MAP PREPARED BY KEYSTONE MAPPING CO. INC. IN AUG. 1958 AND REVISED TO APRIL, 1998 BY ERROL MELNICK, P.L.S. THE ORIGINAL APPROVED MAP IS ON FILE IN THE ENGINEERS OFFICE.  
REVISIONS HAVE BEEN DRAWN USING COMPUTER AIDED DRAFTING/DESIGN (CAD/D).



SEE SHEET 7

SEE SHEET 11

SEE SHEET 12



DEC. 2012 CARL M. HERRMAN, P.L.S. N.J. #42271  
APRIL, 1998 ERROL MELNICK, P.L.S. #34013  
VAN CLEEF ENGINEERING ASSOCIATES  
1129, RT. 31, LEBANON, NEW JERSEY  
REVISED: JAN. 20, 1992

HERITAGE CONSULTING ENGINEERS  
153 BROAD ST, FLEMINGTON, NEW JERSEY  
REVISED: DEC. 1, 1982, JAN. 1, 1984, JAN. 1, 1985, JAN. 1, 1986, DEC. 1, 1986

ROBERT C. BOGART & ASSOCIATES  
ROUTE 312 EMERY AVE., FLEMINGTON, NEW JERSEY

REVISED: TO JULY 1, 1973, AUG. 1, 1974, MAY 1, 1975, NOV. 1, 1975  
AUG. 1, 1976, NOV. 1, 1978, JAN. 1, 1980

NEW JERSEY DEPARTMENT OF THE TREASURY  
APPROVED AS A TAX MAP PURSUANT TO THE  
PROVISIONS OF CHAPTER 175 LAWS OF 1913  
BY: *Chhanna* STATE SUPERVISOR  
DATE: SEP 7 6 1988 SERIAL NO. 209

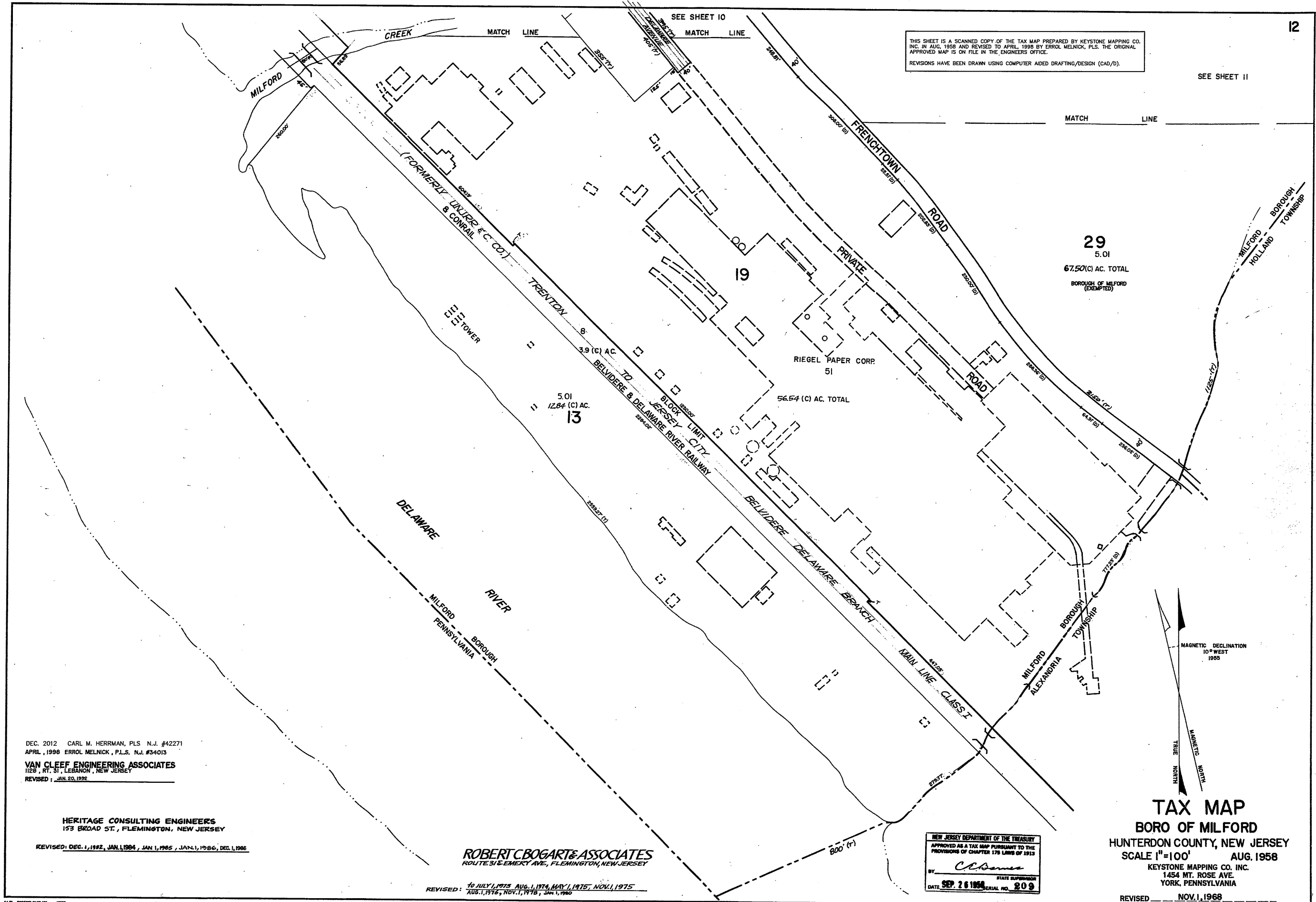
TAX MAP  
BORO OF MILFORD  
HUNTERDON COUNTY, NEW JERSEY  
SCALE 1"=100' AUG. 1958  
KEYSTONE MAPPING CO. INC.  
1454 MT. ROSE AVE.  
YORK, PENNSYLVANIA  
REVISED NOV. 1, 1968

REVISED DEC. 12, 1963, REVISED TO JULY 1, 1973  
TO SHOW CONDITIONS OF DEC. 2012



THIS SHEET IS A SCANNED COPY OF THE TAX MAP PREPARED BY KEYSTONE MAPPING CO. INC. IN AUG. 1958 AND REVISED TO APRIL, 1998 BY ERROL MELNICK, P.L.S. THE ORIGINAL APPROVED MAP IS ON FILE IN THE ENGINEERS OFFICE.  
REVISIONS HAVE BEEN DRAWN USING COMPUTER AIDED DRAFTING/DESIGN (CAD/D).

SEE SHEET 11



DEC. 2012 CARL M. HERRMAN, PLS. N.J. #42271  
APRIL, 1998 ERROL MELNICK, P.L.S. N.J. #34013  
**VAN CLEEF ENGINEERING ASSOCIATES**  
1128, RT. 31, LEBANON, NEW JERSEY  
REVISED: JAN. 20, 1992

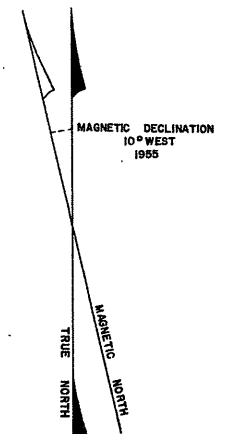
**HERITAGE CONSULTING ENGINEERS**  
153 BROAD ST., FLEMINGTON, NEW JERSEY

REVISED: DEC. 1, 1982, JAN. 1, 1984, JAN. 1, 1985, JAN. 1, 1986, DEC. 1, 1988

**ROBERT C. BOGART & ASSOCIATES**  
ROUTE 51 & EMERY AVE., FLEMINGTON, NEW JERSEY

REVISED: 10 JULY 1973, AUG. 1, 1974, MAY 1, 1975, NOV. 1, 1975  
AUG. 1, 1976, NOV. 1, 1978, JAN. 1, 1980

NEW JERSEY DEPARTMENT OF THE TREASURY  
APPROVED AS A TAX MAP PURSUANT TO THE PROVISIONS OF CHAPTER 178 LAWS OF 1913  
BY *C. L. Dames* STATE SUPERVISOR  
DATE **SEP. 26 1958** SERIAL NO. **209**



**TAX MAP**  
**BORO OF MILFORD**  
HUNTERDON COUNTY, NEW JERSEY  
SCALE 1"=100' AUG. 1958  
KEYSTONE MAPPING CO. INC.  
1454 MT. ROSE AVE.  
YORK, PENNSYLVANIA  
REVISED: NOV. 1, 1968

REVISED TO DEC. 12, 1968, REVISED TO JULY 1, 1973  
TO SHOW CONDITIONS OF DEC. 2012